

# Moisture Analyzers EM 120-HR

**EXECUTIVE PRO** Series 330 XM



High Resolution

Precision

## EXECUTIVE PRO Series 330 XM



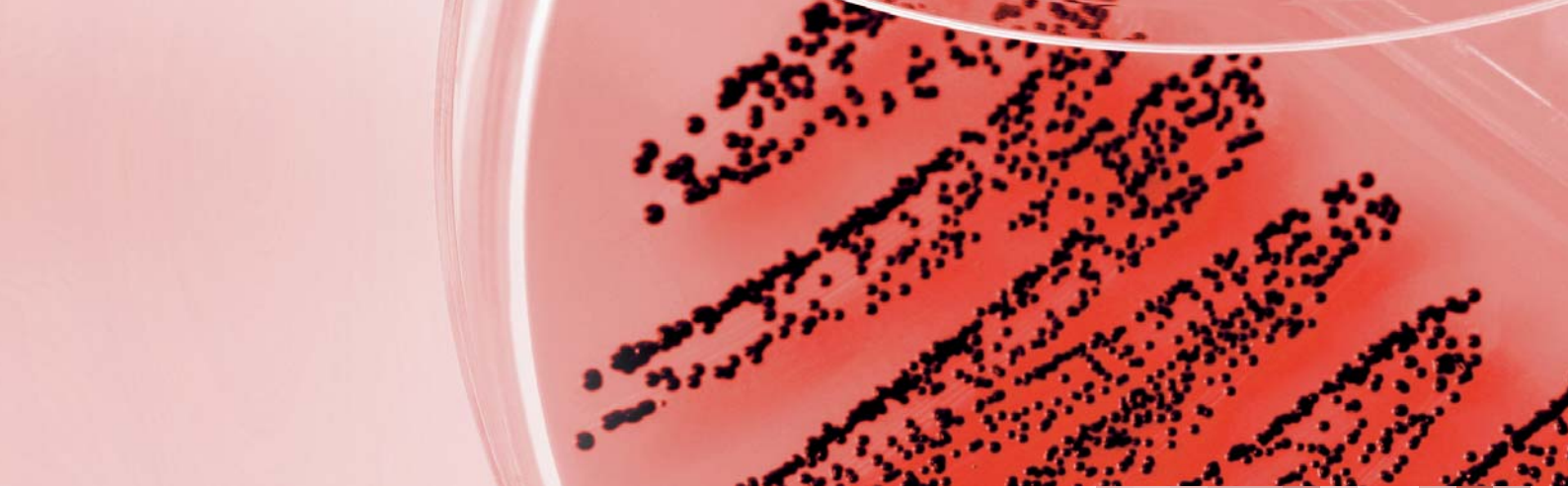
With model EM 120-HR, Precisa is setting new standards in the demanding area of high-end moisture analyzers.

The new top model combines ease-of-use and sophisticated customizing features for advanced and most demanding applications.

EM 120-HR is an innovative, high-tech moisture analyzer, which includes latest technical developments, unique performance features, best user-interface in a modern design. Yet in a compact form with a small footprint. Those users who will not accept any compromise in their working environment may enjoy the reassuring certainty that for many years they can rely on an extremely accurate instrument which features the latest technology and renowned Swiss Quality. Day after day.

**Moisture Analyzers from Precisa -  
for efficient measurements and accurate results.**

**As the leading manufacturer of thermo-  
gravimetric analytical equipment, Precisa excels  
with an extensive range of thermogravimetric  
equipment, meeting highest demands in research,  
production and quality control.**



Compactly styled design



3 different heat sources are optional



Outstanding graphic Display

## **EXECUTIVE PRO**

### **Precisa EM 120-HR**

**READABILITY 0.001 % / 0.01%**

The high-end EXECUTIVE PRO CLASS instrument for the fast and accurate moisture analysis with a wide range of methods; sophisticated and simple to operate, complying to the most stringent standards.

#### **HIGHLY PRECISE TECHNOLOGY**

- Weighing range 124 g
- Adjustable readability: 0.1 mg / 0.001 % and 1 mg / 0.01 %
- High temperature range up to 230 C°
- Automatic self calibration system (SCS)
- Bright graphic display
- Extended memory capacity, 100 methods
- Choice of heat element: halogen, infrared, dark radiator
- USB and RS232 interfaces as standard

#### **INTUITIVE USER INTERFACE**

- Freely programmable display
- Graphic presentation of the analysis
- Big choice of auto stop criteria settings

#### **QUALITY ASSURANCE**

- Compliance with GLP and GMP
- Numerical and statistical analysis available
- Real-time observation of analysis

#### **VERSATILE CONNECTIVITY**

Advanced slide-in module technology: USB Host, Ethernet wired, Ethernet wireless, Bluetooth and others.



## LIFE-LONG RELIABILITY

The Moisture analyzers offer a high degree of protection against mechanical and electrical interference and operate with highest levels of precision from the initial weigh-in procedure to the final result. The premium workmanship of our robust housing and chemically-resistant sealed keypad offers protection against spills, makes moisture analyzers amazingly resistant to the ambient conditions of the surrounding environment.

Technical Specification:	EM 120-HR
Heat Source	Halogen / Infrared / Dark
Weighing range (g)	124
Readability (g)	0.001 / 0.0001
Pan Size Ø (mm)	100
Smallest sample weight (g)	0.2
Readability (%)	0.01 / 0.001
Reproducibility (%) at approx ... g / ... %	1 / 0.1
Reproducibility (%) at approx ... g / ... %	10 / 0.01
Results calculations:	
Ridual weight (g), Weight loss (g), g/kg	•
100% ... 0%, 0% ... 100%	•
ATRO 100% ... 999%, ATRO 0% ... 999%	•
Temperature range / Step (°C)	50 - 230 / 1
Heating modes	standard, boost, ramp
Auto Stop (d/s) / (%/s)	free definable
Minimum Stop (%)	01 - 99.9
Timer Stop	1 s - 600 min
AdapStop	•
Print-out GLP	•
Methods (with all settings)	100
Dimensions WxLxH (mm)	240x380x177
Weight (kg)	6.7
Power Consumption (W)	420

Accessories	EM 120-HR
Aluminium dishes, Ø 100 mm, (Box with 80 pcs.)	350-2032
Stainless steel dish, reusable, Ø 100 mm (1 pcs.)	330-2018
Fibreglass-filters, Ø 90 mm, (box with 80 pcs.)	350-4130
Temperature sensor plate, Sensor - type K	350-8580
Temperature calibration set, Sensor - Typ K with certificate	350-8585
Temperature calibration set, Sensor - Typ K without certificate	350-8584
Calibration weight, 50 g	350-8241
Printer CBM910 230V - with cable and paper roll	350-8379
Printer CBM910 115V - with cable and paper roll	350-8380
Paper roll for Printer CMB910	350-8366
Ribbon for printer CBM910	350-8367
Data cable DB9 male / DB9 female 1.5 m (PC)	350-8672
Data cable DB9 male / DB25 male 1.5 m (Printer)	350-8673

Options	EM 120-HR
Halogen heating system	standard
Infrared heating system	available
Dark radiator heating system	available

Slide-in Modules	EM 120-HR
USB Host	350-8665
Ethernet wired	350-8666
Ethernet wireless	350-8667
Bluetooth	350-8668
PS 2 Female & RS 232 DB9 Female	350-8670

## Features and Applications



Swiss made



Support IQ/OQ/PQ



Interface RS232 for PC/Printer



Automatic Repeatability Test (ART)



LCD backlit graphic display



Anti theft protection - password and mechanical security



USB Device



Check weighing plus/minus



Fully automatic internal calibration system SCS



Communication options (USB Host, Bluetooth, Wireless etc.)



Clock (Printout GLP/GMP, Auto-Cal etc.)



Statistics



Easy alpha-numeric input



Precisa Gravimetrics AG  
Moosmattstrasse 32  
CH-8953 Dietikon

Tel. 0041 (0)44 744 28 28  
Fax 0041 (0)44 744 28 38

www.precisa.com  
info@precisa.ch

